

TAM 11/20/92
 APPROVED BY/DATE
 REV

SAFETY ORGANIZATION(S):

THIS FILTER HAS BEEN FORMALLY RECOGNIZED, CERTIFIED OR APPROVED BY THE LISTED AGENCY. THEREFORE, ALL TEST/REQUIREMENTS SPECIFIED IN THE LATEST REVISION OF THE FOLLOWING AGENCY STANDARDS HAVE BEEN MET.

UL RECOGNIZED
 CSA CERTIFIED
 VDE APPROVED

IN PROCESS
 IN PROCESS
 IN PROCESS

OPERATING SPECIFICATIONS:

LINE VOLTAGE/CURRENT, 6 AMP., 120/250 VAC
 6 AMP./40°C, 250 VAC
 50-60Hz
 MAX. LEAKAGE CURRENT, EACH .25mA at 120V 60 Hz
 LINE TO GROUND .42mA at 250V 50 Hz
 OPERATING AMBIENT TEMP. RANGE, -10°C TO +40°C @ RATED CURRENT, I_r
 IN AN AMBIENT, T_a, HIGHER THAN 40°C, THE MAXIMUM OPERATING CURRENT, I_o, IS AS FOLLOWS:

$$I_o = I_r \sqrt{\frac{85 - T_a}{45}}$$

RELIABILITY SPECIFICATIONS:

STORAGE TEMPERATURE, -25°C TO +85°C
 HUMIDITY, 21 DAYS @ 40°C 95% RH
 CURRENT OVERLOAD TEST, 6 TIMES RATED CURRENT FOR 8 SECONDS

TEST SPECIFICATIONS:

INDUCTANCE, 0.93 mH NOMINAL
 CAPACITANCE, (MEASURED @ 1 KHZ, 0.25 VAC MAX., 25°C ±1°C)
 LINE TO GROUND, .003µF ±20%
 LINE TO LINE, .02µF ±20%
 DISCHARGE RESISTOR, 1.5MΩ
 LINE/GROUND AND LINE/LINE 6000 MΩ (MIN) AT 100 VDC
 INSULATION RESISTANCE 20°C AND 50% RH (W/O DISCHARGE RESISTOR)

RECOMMENDED RECEIVING INSPECTION HIPOIT.

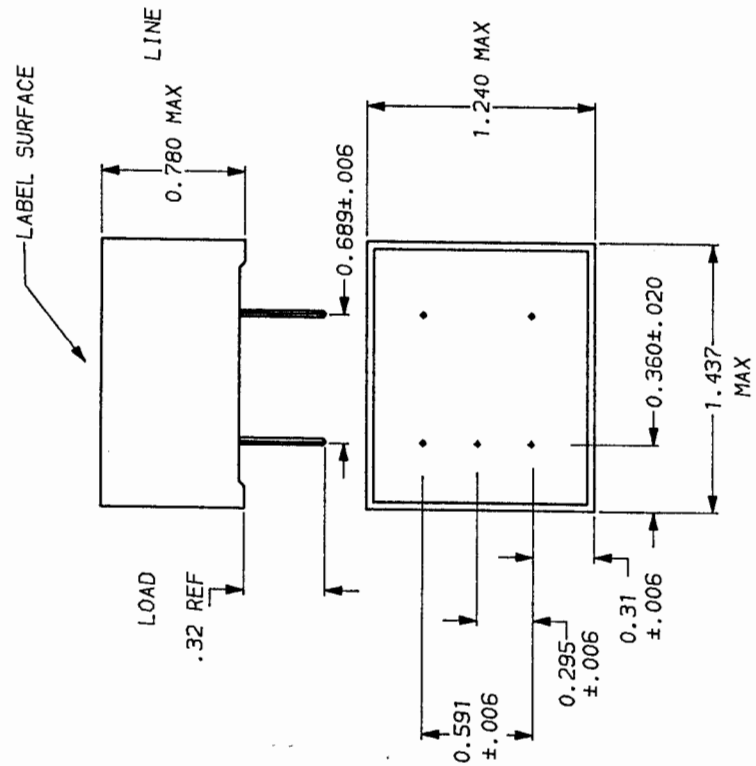
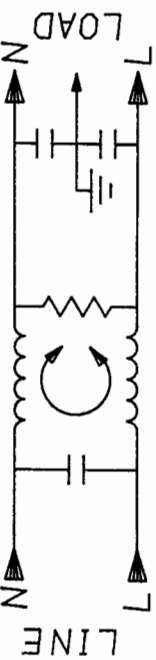
LINES TO GROUND, 1500 Vac FOR 1 MINUTE
 LINE TO LINE, 1450 VDC FOR 1 MINUTE

FILTER APPROVAL:

THE BEST WAY TO SELECT AND QUALIFY A FILTER IS FOR YOUR ENGINEERING TO TEST THE UNIT IN YOUR EQUIPMENT.

50Ω - 50Ω (MINIMUM) INSERTION LOSS										
FREQUENCY MHz	1	2	3	4	5	8	10	20	30	
COMMON	15	24	25	29	31	36	40	45	45	40
DIFF. dB	1	4	6	9	17	40	40	41	42	35

This document is proprietary to CORCOM INC. and is not to be reproduced nor used for manufacturing purposes except on CORCOM's order or prior written consent.



corcom
 LIBERTYVILLE, IL 60048

POWER LINE FILTER

SCALE DATE 10/21/92
 NTS
 REV. BY TAM
 ORIGINATOR TAM
 DRG. NO. 6EOP.00
 REV. 00

TOLERANCE EXCEPT AS NOTED
 DECIMAL, .XXX .XX .X ANGLES ± 1°
 ENGLISH, ±.025
 METRIC, ±
 MATERIAL: AS SUPPLIED

FINISH: